



Hampshire Hockey Player Pathway

Winchester Hockey Club fully supports the current England Hockey “Player Pathway” System programme and each season works closely with Hampshire HA to deliver players & coaches into this programme. Initial player entry to the programme is managed through Winchester Hockey Club, and the Coaches will work with players and parents each season to put forward suitable players into the programme.

More info: Hampshire Player Pathway website - <https://www.hampshirehockey.net> and England Hockey website - <http://www.englishockey.co.uk/page.asp?section=2132§ionTitle=The+Player+Pathway>

Please Note – this season (21-22) will be the last operating under this scheme, and will be replaced by the EH sponsored Talent Development programme – which Winchester will emulate and participate in.

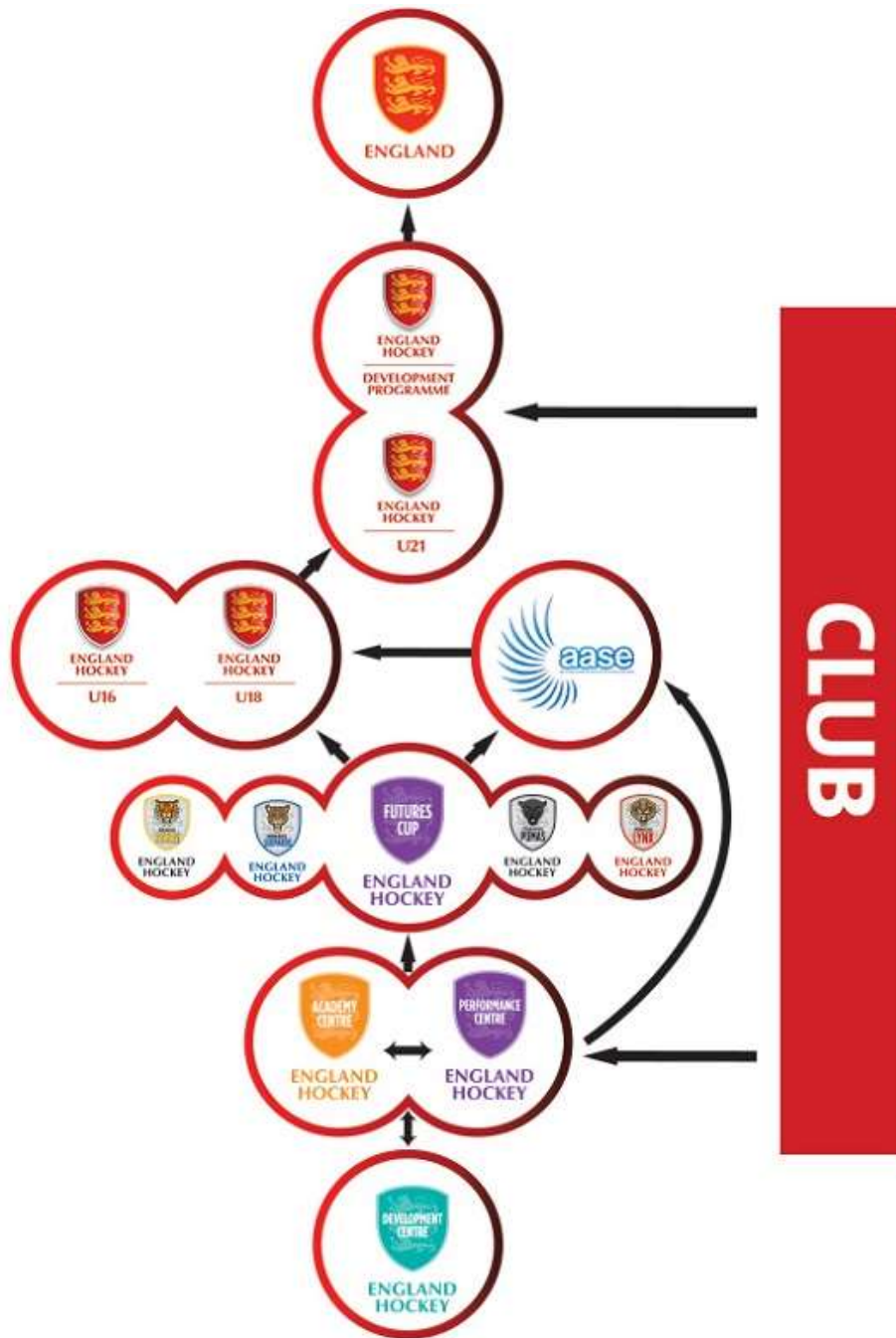
Overview to the programme:-

The Player Pathway provides an environment that helps all junior players realise their potential, whether that means they are the best club player they can be, seek a lifelong commitment to the game through coaching or volunteering or perhaps go on to represent England or Great Britain at junior or senior level.

- **Development Centres** - provide a local entry point to the Player Pathway for U13s-U17s
- **Academy Centres** - delivered in 49 counties, provide a high quality talent programme for players identified in U13-U17 age groups
- **Performance Centres** - based across the country providing frequent, high quality training with the best coaches for U15 and U17 players
- **Futures Cup** - supports player development within a high intensity and pressurised best-v-best tournament environment
- **Diploma in Sporting Excellence (DiSE)** - provides additional training and sport-related education for U17 players selected from Performance Centres
- **National Age Group Squads (NAGS)** - selected at U16 and U18 age groups for girls and boys. Provides the first taste of international competition for our young players
- **U21/Development Programme** - an elite training environment for players who aim to transition into the senior programme and become world-leading players

Date of Birth Table

Birth Year	2018-19	2019-20	2020-21	2021-22
2000				
2001				
2002	Under 17			
2003	Under 16	Under 17		
2004	Under 15	Under 16	Under 17	
2005		Under 15	Under 16	Under 17
2006			Under 15	Under 16
2007				Under 15



Who is the Player Pathway for?

All young and developing players, whether they simply enjoy playing sport or are the most talented players aiming to become junior or senior internationals

- Players aged 12-17 or 16-23+ for NAGS, U21 and Development squads

How do players move through the Player Pathway to become junior or senior internationals?

Players move through the Player Pathway at different rates and at different stages of their development. It is important to remember that no two journey through the Player Pathway are the same.

Stage One – Development Centres:-



What happens?

Players take part in a range of training sessions or camp-based activities to develop their skills and begin to stretch them beyond school and club hockey.

How do I get involved?

- Players are usually nominated by their school or club to attend a Development Centre
- Players can be nominated from the age of 12-16
- Players who want to play more hockey and develop their skills outside of school or club hockey should attend a Development Centre

What are the entry and exit points?

Players can join a Development Centre at any point during the cycle but, depending on location, Centres will run at different points during the season. Details of running dates can be found on the Hampshire Player Pathway website.

Who is it run by?

Run by the Hampshire Hockey Association.

Formerly called the JDC, the DC is the first step on the Player Pathway after club and school hockey. The DC is for committed and enthusiastic players who want to take their hockey to the next level. The training consists of 5, 2-hour sessions and a friendly festival event and following the DC, coaches will select those players who are ready, for the AC (Academy Centre) selections.

The best feedback is given on the pitch and in the moment, and players are encouraged to attend the DC with the right mindset and motivated to improve and develop.

Hampshire is proud to have a team of great coaches and we use the DC sessions to further develop existing and new coaching talent. Each DC centre is led by experienced coaches, min. qualified to Level 2, and our coach development programme and activities engaging with the Hampshire clubs, ensure we continue to deliver the best coaching experience for young Hampshire hockey players.

Stage Two – Academy Centres



What happens?

Players take part in six training sessions and four competition days at local Academy Centres. Dates and times are scheduled by the Hampshire County Hockey Association who run the Centres.

How do I get involved?

- Players are usually nominated to attend an Academy Centre by their Development Centre coaches
- Players may be nominated by their school if they have previously attended a Development Centre
- Players can be nominated from the ages of 12-16
- Players who consistently demonstrate strong skills are invited to Academy Centres

If you are not selected for an Academy Centre do not worry, you should continue to develop your hockey through school, club and Development Centre activity. You may be nominated to attend an Academy Centre later in the season and can be nominated at any age group.

What are the entry and exit points?

Players enter Academy Centres in October. There are transition points during the year where players may be selected for a Performance Centre. Details of running dates can be found on the Hampshire Player Pathway website.

Who is it run by?

Run by the Hampshire Hockey Association.

The AC is the second step on the player development pathway and is open to players who have been nominated at the DCs and players currently in, or coming back from, the PC activities.

Current DC players will hear from their coach after the DC Festivals if they are selected for the AC assessments. Please note that an invitation to attend the assessments does NOT mean you're selected for the AC. The final decision on who is in the AC squad will be made by the AC coaches after the assessments in December.

Stage 3 – Regional Performance Centre



What happens?

Players take part in 10 evening sessions, five day sessions and up to four competition days at one of 17 performance centres. Performance Centres are run by the Regional Hockey Associations.

Contact details for your Regional administrator are:

- South – Southampton – Heather Windust - southamptoncentremanager@englandhockey.co.uk

How do I get involved?

Players are nominated to attend a Performance Centre **by their Academy Centre**. Players can be nominated from the U15 and U17 age groups. Players who consistently demonstrate strong skills are invited to Performance Centres

If you are not selected for a Performance Centre do not worry, you should continue to develop your hockey through school, club and Academy Centre activity. You may be nominated to attend a Performance Centre later in the season.

What are the entry and exit points?

Players enter Performance Centre in September. There are transition points during the year where players may be selected for a Performance Centre.

Do National Age Groups Squads attend Performance Centre?

For more information about National Age Group Squads in Performance Centre, please click [here](#).

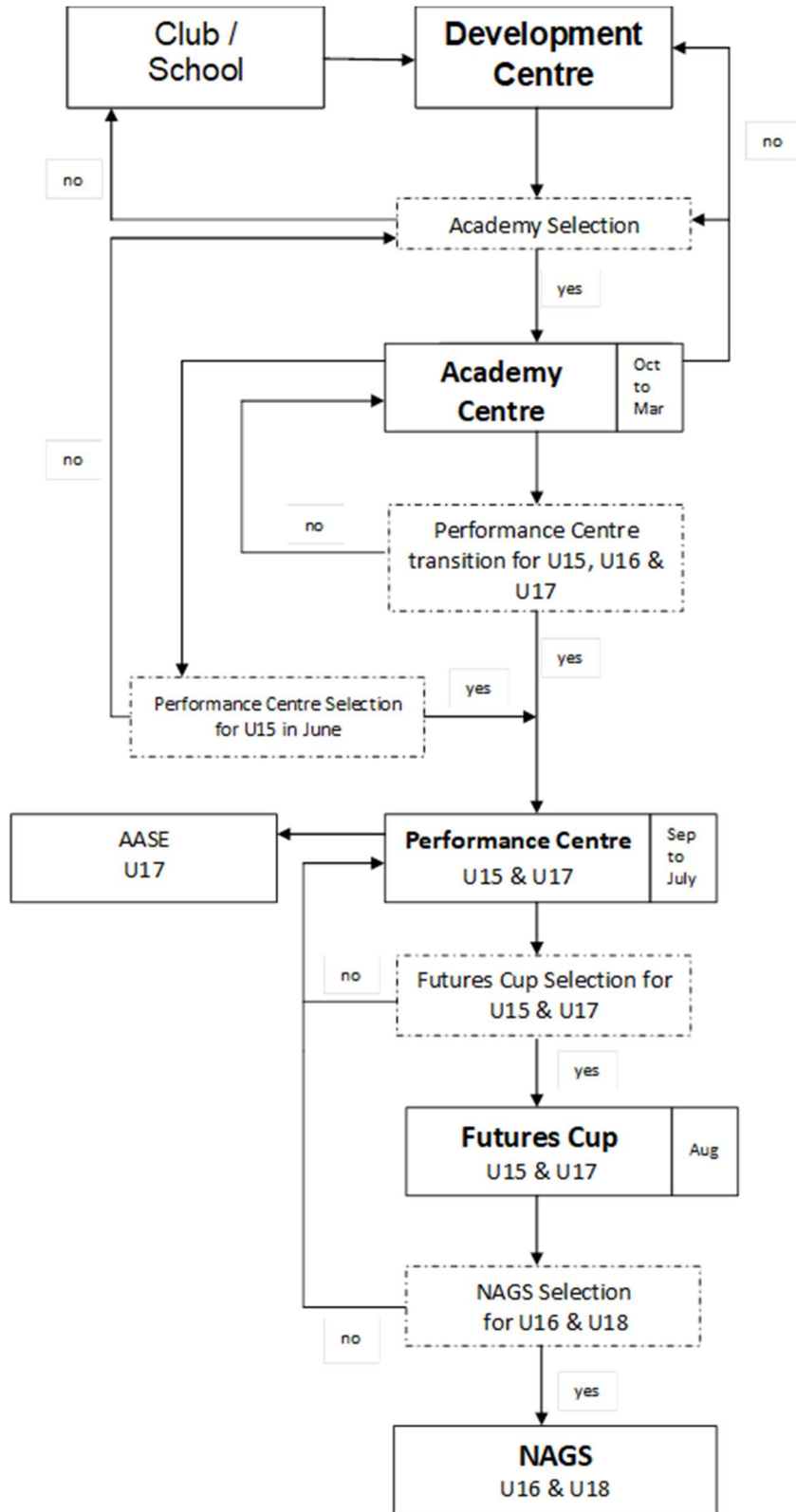
Can I attend more than one Performance Centre in order to manage my school commitments?

For more information about being a guest player at a Performance Centre, Please click [here](#).

Who is it run by?

Performance Centres are run by Regional Hockey Associations. (South Central) .

The Player Pathway route – outline – (speak with your Coach for more information).



Below you can find the answers to some FAQs from England Hockey related to the Player Pathway.

1. Why has the pathway been updated?

Following the Single System review in 2013 a number of areas were highlighted that needed revision. This, combined with a better understanding of talent development, has led to some evolution. Some of the key things that the updates aim to improve are: 1) more openness and flexibility for players; 2) recognising that players develop at different stages and ages; 3) making sure the right player is in the right environment for the majority of their contact time; 4) implementing a principle of frequent, high quality contact time to support player development.

2. What are the updates to the pathway based on?

The updates to the Player Pathway are based on: 1) the 2013 Single System Review; 2) a consensus of scientific research, specifically relating to learning and team sports; 3) a regional and county working group who formed initial ideas; 4) consultation with regions and counties.

3. What if my child is too old for Player Pathway activity?

If your child is too old but has aspirations to develop further, we would strongly encourage players to seek out good club environments that have a good record of stretching and developing players. Club hockey is critical to England Hockey's development of players. For more information on club hockey please visit the 'Play' section of our website [here](#).

4. What is my child's route to playing junior international hockey as an U21?

There are two main routes. Firstly, the U18 and U21 head coaches speak regularly about players that are developing. During and after the U18 programme there are opportunities to be exposed to and transition into the U21/Development Programme.

Secondly every year there is an opportunity to be put forward to an U21 assessment if you play and train at one of the National League clubs. Every autumn the National League clubs are invited to nominate players who may be suitable for the U21 and Development Programme. Following an assessment, players are selected for further talent confirmation or continued involvement in the programme. Historically we have selected players every year, some of whom have gone on to play U21 and senior international hockey. If you look at the player profiles on our Talent Development page by clicking [here](#), you will see the success of some players who may not have had the most traditional route through the pathway.

5. As a NAGS player what are the opportunities for me?

As a NAGS player England Hockey provide a full competition and training programme which aims to support the development of world-leading hockey players. NAGS players are exposed to some of the best coaches in the country and the toughest European competition to support their development.

6. My child gets a better level of coaching in school/club hockey than in Development/Academy Centres. What should they do?

We are continually striving to develop the quality of coaching across all environments. If you feel that your child is getting a better quality of coaching in their school/club then you should speak to your local county about what flexibility there is.

7. Why has Futures Cup moved to August?

Futures Cup has been moved to August to support the NAGS programme which will now be able to run for an extended period of time from September-July instead of February-July. Running the tournament out of the school year will also lessen the pressure of balancing hockey with academic work for our players.

8. Why are teams from Scotland and Wales taking part in Futures Cup?

This enables the best young players in Great Britain to be seen by GB Hockey at the earliest possible age. At the Olympic Games we are represented by teams from Great Britain and therefore wanted to extend the opportunity to play in a major tournament to the best young players from Scotland and Wales.

9. How much will Player Pathway activity cost?

The cost of Player Pathway activity is set by counties for Development and Academy Centres and regions for Performance Centres. The cost of Player Pathway activity from Futures Cup and beyond is set by England Hockey and players and parents will be informed of this following selection to these tiers.

10. Are age groups reverting to school years?

Age grouping has not changed. Age groups still run from the 1st January-31st December.

12. What relationship does the UK Lions have to the England Hockey Player Pathway?

England Hockey (EH) has a neutral position in relation to hockey players participation in the UK Lions Squad. The decision for any player to participate should be a parent and player decision.

Participation for UK Lions, in any event, has no bearing on selection to any level of the player pathway or England Hockey representative activities. The UK Lions squad is not part of the England Hockey Player Pathway - U18 and U16 England squads are selected from EH Performance Centres which are accessed through local Academy Centres.